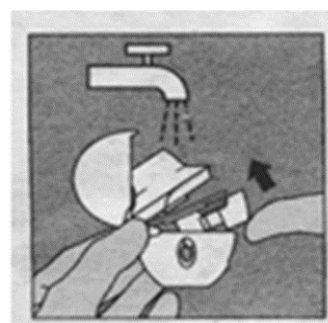
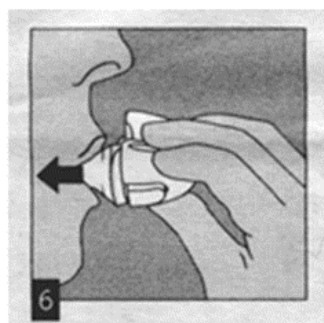
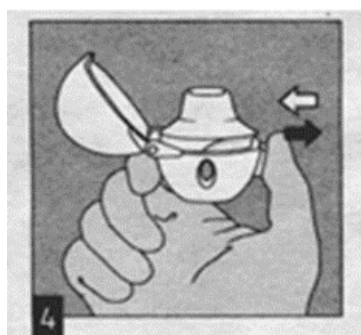
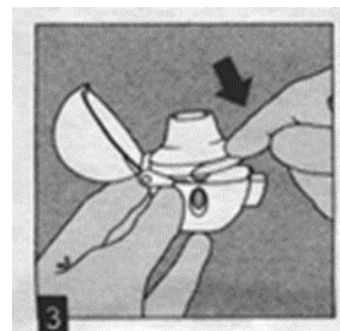
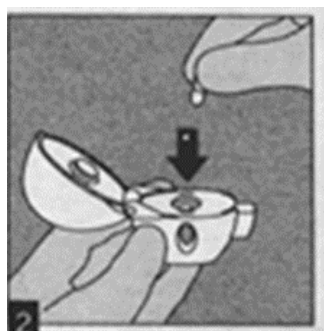
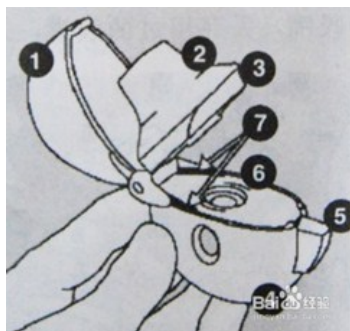


# 思力华的使用方法



北京清华长庚医院  
Beijing Tsinghua Changgung Hospital

## 用药咨询中心

MEDICATION CONSULTATION CENTER



电话: 010-56118555



### 思力华

### 噻托溴铵粉雾剂

德国 Boehringer Ingelheim Pharma

GmbH & Co. KG